



GOVERNANCE STRUCTURE

July 2024 Version 1.1

caring | committed | connected

About us

As a not for profit health charity, Rural Doctors Foundation is accountable to the Australian Charities and not-for-profit Commission (ACNC). We were established in 2014 as RDAQ (Rural Doctors Association Queensland) Foundation, a Company Limited by Guarantee.

In 2015, the Foundation achieved Deductible Gift Recipient (DGR) status. Our focus at this time was to improve the health outcomes of those living in rural Queensland.

With a change to our Constitution in 2021, we expanded our focus to those living in rural Australia. Our name was changed to Rural Doctors Foundation at this time to support this broader scope.

Our Vision, Purpose and Values

Our vision

Rural doctors for rural communities.

Our purpose

To support better health in rural and remote communities.

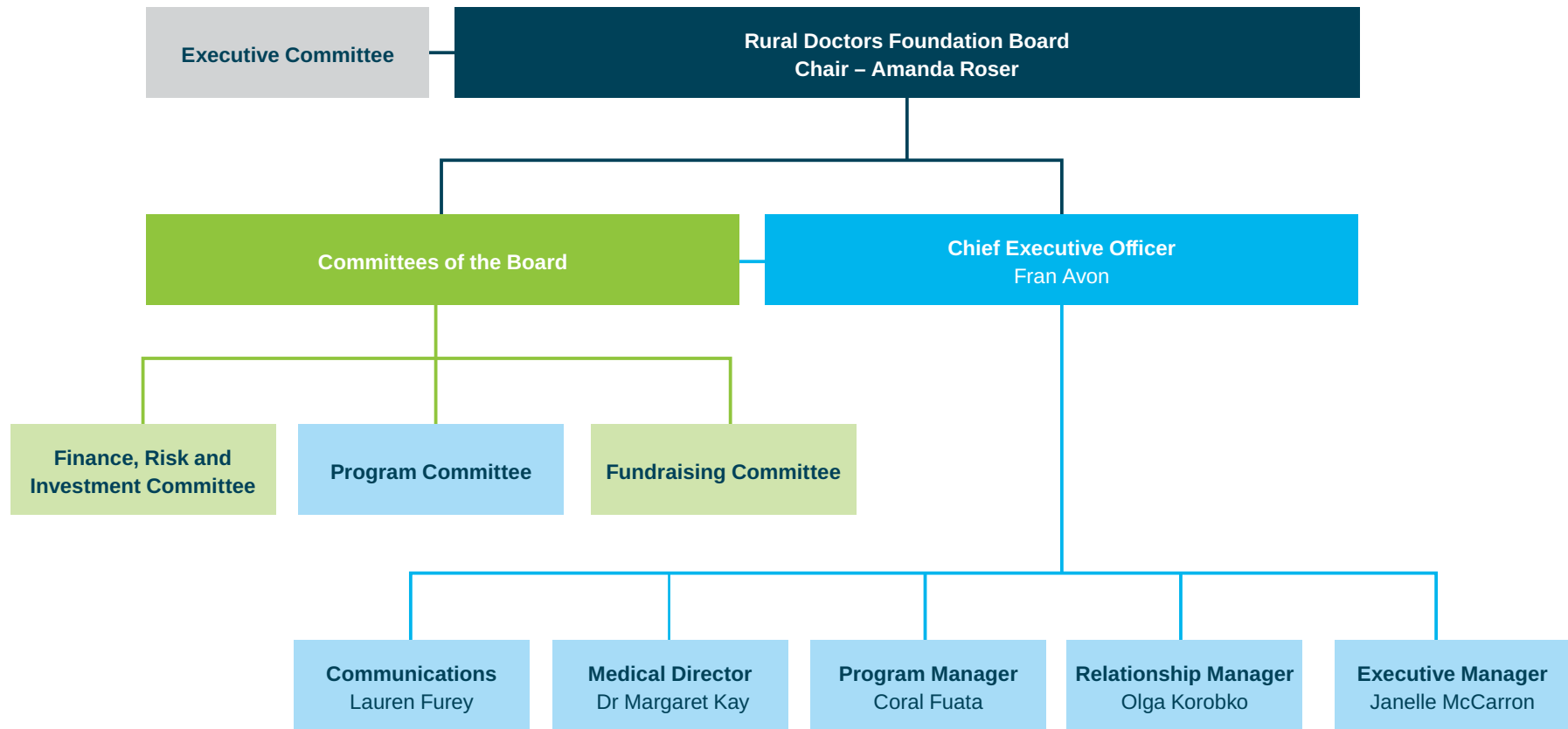
Our values

Courage: We will act with conviction and integrity and take informed risks.

Trust: We will be credible, reliable, connected and selfless.

Care: We will be diligent, compassionate, responsive and effective.

Governance and program oversight



Our governance structure

Constitution
Drafted by lawyers
Endorsed by Members



[Click here to view](#)

Board
Meets at least 6 times a year

Executive team

Accountable to:

- ACNC
- Members
- Funding bodies and supporters

Operating under:

- Strategic plan
- Governance framework ([Click here to view](#))
- Terms of reference
- Risk management framework
- Code of conduct
- Schedule of delegations

Supported by:

- Program Committee
- Executive Committee
- Finance, Risk and Investment Committee
- Fundraising Committee

Accountable to:

- Board
- Members
- Funding bodies and supporters

Operating under:

- Business plan
- Governance Framework ([click here to view](#))
- Branding guidelines
- Code of Conduct
- Schedule of Delegations

Our governance structure

The Rural Doctors Foundation Board

The Board, its Committees and the Executive Team operate in line with defined Governance and Risk Management Frameworks. All policies have been reviewed and approved by the Board.

The Board is supported by Committees of the Board which operate with defined and approved Terms of Reference.

Program Committee
providing oversight for GPs 4 rural docs

Executive Committee

Finance, Risk and Investment Committee

Fundraising Committee

These Committees are comprised of rural GPs and business professionals including finance, legal, governance, risk and compliance, HR, marketing and fundraising specialists.

Potential risks are reported in line with predetermined escalation procedures and all decisions are made in accordance with the Delegations Schedule and Risk Appetite Statement.

The Board are supported by an Executive team managed by an CEO with extensive experience in the not-for-profit sector.

Those responsible for program delivery include the Medical Director and Program Manager. The Executive Manager manages the day to day financial matters including payment of invoices. The Relationship Manager provides support for Grant reporting requirements. The CEO provides strategic oversight and is responsible for communication with the Board and relevant Committees.

Our Board

We have a volunteer Board comprised of rural GPs and business professionals.



CHAIR
TOWNSVILLE
Amanda Roser
BBus (Acc), MBA PROSCI
Finance and Compliance Specialist



DEPUTY CHAIR
ECHUCA
Dr Sue Harrison, OAM
MBBS, DA, FACRRM,
Masters of Sports Medicine



TREASURER
SYDNEY
Stephen Buchanan
FBBus (Acc) MBus (AppFin)
Finance and Investment Specialist



SECRETARY
BRISBANE
Rohan McPhee
BA/LLB (Hons), GDLP
Legal Specialist



DIRECTOR
BRISBANE
Glenda Colburn
EMBA
Health Research Specialist



DIRECTOR
PORT MACQUARIE
Dr Marian Dover
MBBS, Bachelor of Clinical Science,
DRANZCOG



DIRECTOR
GOONDIWINDI
Dr Sue Masel
MBBS DRANZCOG FRACGP
FARGP (Anaes) DACSCM FACRRM
Rural Generalist, Medical Educator
and RDAA Board Member



DIRECTOR
TOWNSVILLE
Dr Michael Rice
MBBS DRANZCOG FRACGP
FACRRM
Rural Generalist and Senior Lecturer



RDAQ NOMINEE
Gympie
Alex Dunn

Our Finance, Risk and Investment Committee

Sentence under heading to read We have a volunteer committee comprised of finance, risk and investment specialists.



TREASURER
SYDNEY
Stephen Buchanan
FBBus (Acc) MBus (AppFin)
Finance and Investment Specialist



DIRECTOR
BRISBANE
Glenda Colburn
EMBA
Health Research Specialist



COMMITTEE MEMBER
GOLD COAST
Rachael Gaven
CPA, FGIA



COMMITTEE MEMBER
TOOWOOMBA
Ross Ole



COMMITTEE MEMBER
BRISBANE
Mark Scales



COMMITTEE MEMBER
TOWNSVILLE
Professor Tarun Sen Gupta
MBBS FRACGP FACRRM PhD

Our Program Committee

We have a volunteer committee comprised of rural GPs and business professionals.



COMMITTEE CHAIR
ECHUCA
Dr Sue Harrison, OAM
MBBS, DA, FACRRM,
Masters of Sports Medicine



COMMITTEE MEMBER
ROMA
Dr Tony Brown
MBBS MHA FACRRM FRACGP Adv
Dip RANZCOG GAICD
Rural Generalist and Chief Executive
of South West Hospital and Health
Service



COMMITTEE MEMBER
BRISBANE
Courtney Coyne
BA/LLB (Hons), GDLP
Legal Specialist



COMMITTEE MEMBER
PROSERPINE
Dr Konrad Kangru
BAppSci, MBBS, FRACGP
Rural Generalist and Medical
Educator



COMMITTEE MEMBER
CHARLEVILLE
Leanne Patton



COMMITTEE MEMBER
TOWNSVILLE
Dr Michael Rice
MBBS DRANZCOG FRACGP
FACRRM
Rural Generalist and Senior Lecturer



COMMITTEE MEMBER
TOWNSVILLE
Professor Tarun Sen Gupta
MBBS FRACGP FACRRM PhD
Rural Academic and Professor of
Health Professional Education,
Chair of Assessment Committee,
ACRRM

Fundraising Committee

We have a volunteer committee comprised of rural GPs and business professionals.



COMMITTEE CHAIR
BRISBANE
Glenda Colburn
EMBA
Health Research Specialist



COMMITTEE MEMBER
PORT MACQUARIE
Dr Marion Dover
MBBS, Bachelor of Clinical
Science, DRANZCOG



COMMITTEE MEMBER
GOONDIWINDI
Dr Sue Masei
MBBS DRANZCOG FRACGP
FARGP (Anaes) DACSCM FACRRM
Rural Generalist, Medical Educator
and RDAA Board Member



**COMMITTEE MEMBER
AND SECRETARY**
BRISBANE
Rohan McPhee
BA/LLB (Hons), GDLP
Legal Specialist

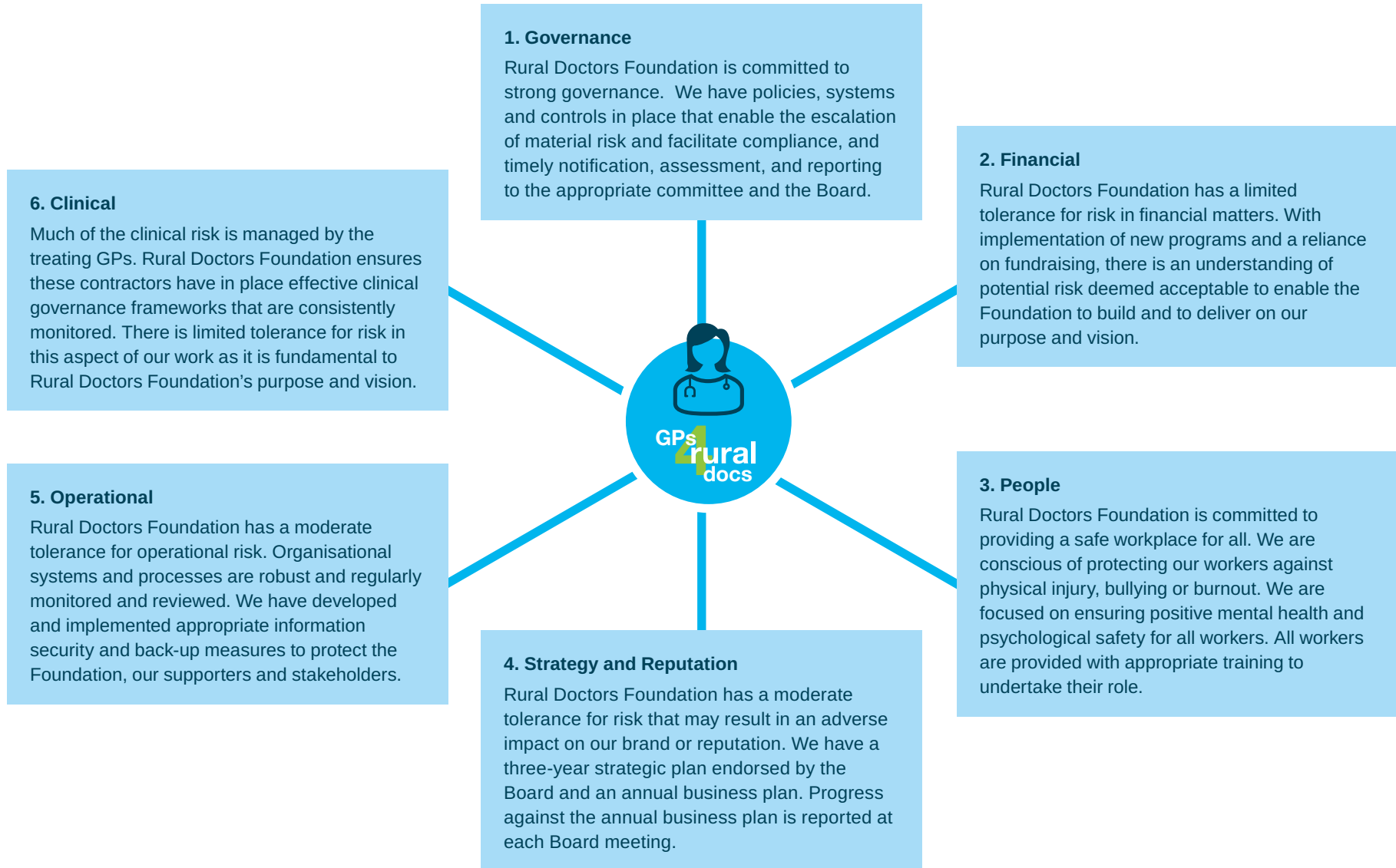


COMMITTEE MEMBER
TOOWOOMBA
Ross Ole



COMMITTEE MEMBER
SYDNEY
Vanessa Thorne
B.Sc, Pure Mathematics
Risk Management Specialist

Risk management framework





Rural Doctors Foundation

Level 1 324 Queen Street
Brisbane Qld 4000

GPO Box 1495
Brisbane Qld 4001

(07) 3039 0011

info@ruraldoctorsfoundation.org.au

