

GOONDIWINDI 4390

MMM4

Distribution Priority Area Workforce Shortage for Specialists

Sitting at the junction of five major highways, Goondiwindi is a well-established border town, 353km from Brisbane. It is MMM4 and part of the Goondiwindi Regional Council. 64.4% of the population are employed. Average weekly household income is \$1,629 which is \$505 above the national average.

Health Services

Goondiwindi falls with the Darling Downs Hospital and Health Service and is supported by the Darling Downs and West Moreton PHN. Goondiwindi has a 20 bed hospital and there is an ambulance service available. Acute cases can be transferred to Toowoomba Hospital (473 beds) which is 221km away.

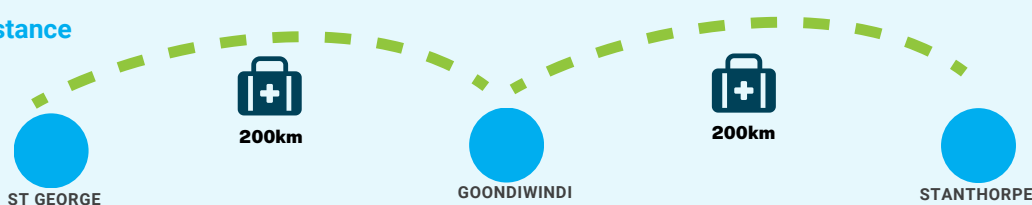
Local Services

Goondiwindi has a range of accommodation options ranging from \$100. There are a range of food options and there are restaurants open for dinner. There are hire car services available in Goondiwindi and there is a local taxi service.

Access to GPs

With only one GP practice in town and resources being shared between the practice and the hospital, there are limited options for health practitioners to receive GP services. The closest major town to seek GP services is Moree, which is in NSW. Warwick is 200km away. The respondent to our survey has to travel 360km to receive healthcare and does not feel there is continuity of care available. They are interested in the doctor exchange program.

Access and Distance



DEMOGRAPHICS



6,230



48.2%



51.8%



1,571

Median Age

38

COUNTRY OF BIRTH



84.4%



1.1%

ANCESTRY



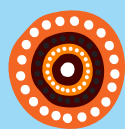
43%



38.1%

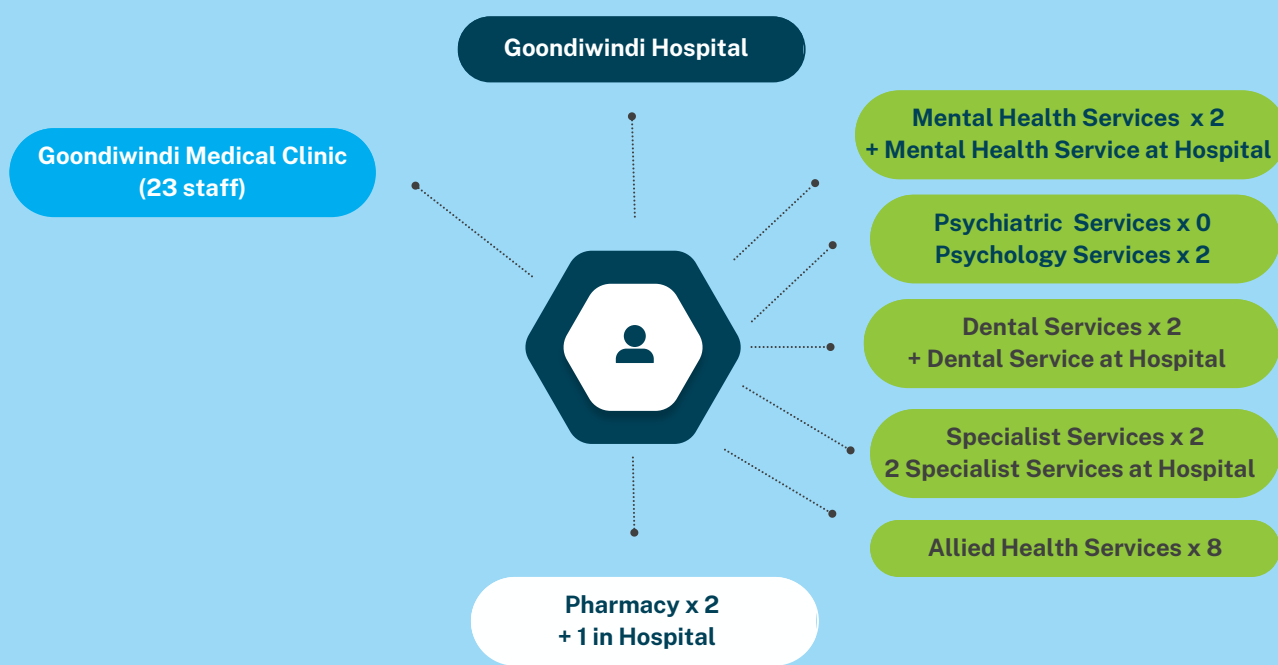


12.4%



8.1% Indigenous Australians

HEALTH SERVICES



KEY HEALTH ISSUES

